

GENERAL OVERVIEW

• **REIDIN Real Estate Confidence Index** for 2026 Q2 has been measured as 91.9 (Moderately Negative) **less than 11.7%** of last quarter.

Quarterly Change

-11,7%

Yearly Change

-3,8%

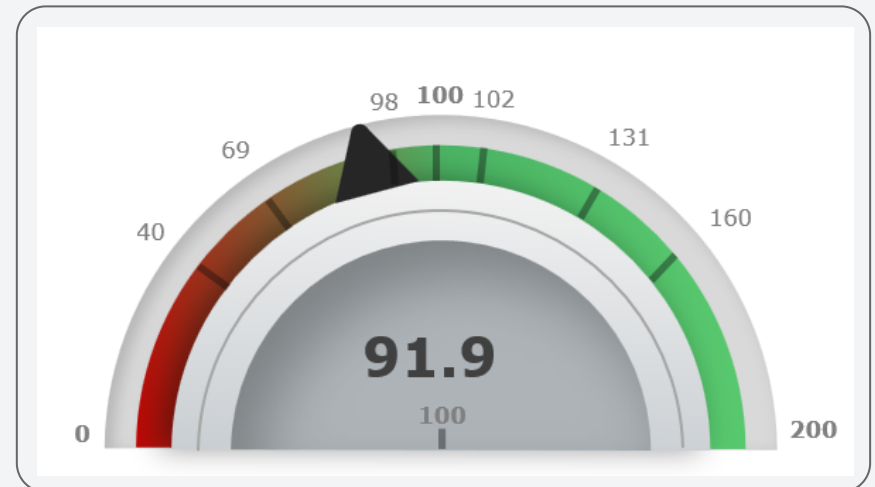
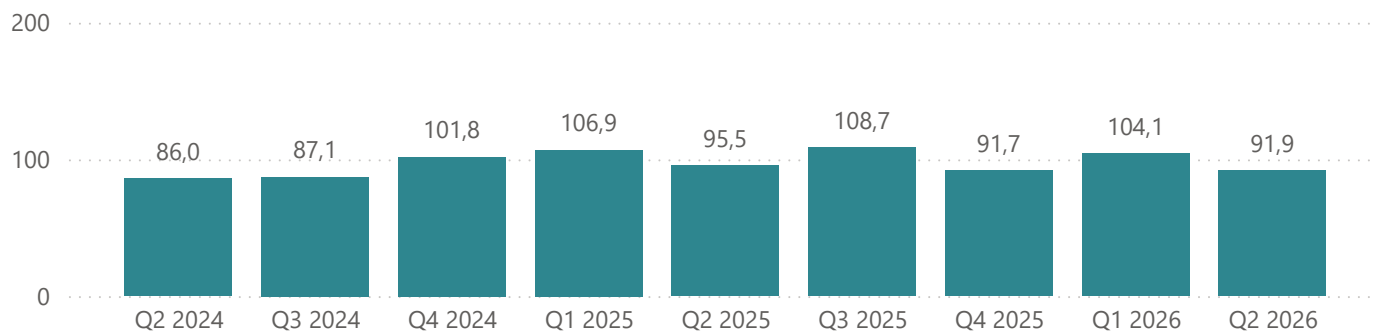
Avg. Of last 1 years (Nearly Stable)

99,1

Avg. Of last 2 years (Nearly Stable)

98,5

REIDIN REAL ESTATE CONFIDENCE INDEX



• **REIDIN Real Estate Price Sentiment Index** for 2026 Q2 has been measured as 145.0 (Positive) **more than 6.8%** of last quarter.

Quarterly Change

6,8%

Yearly Change

-6,9%

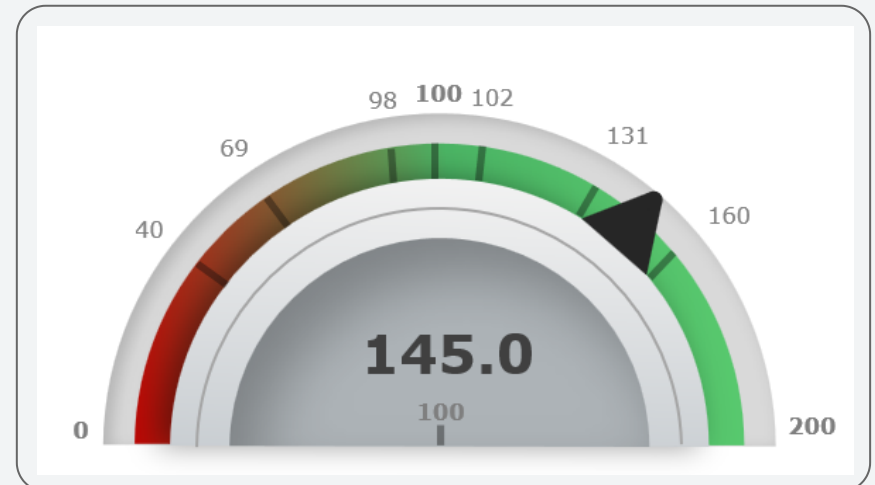
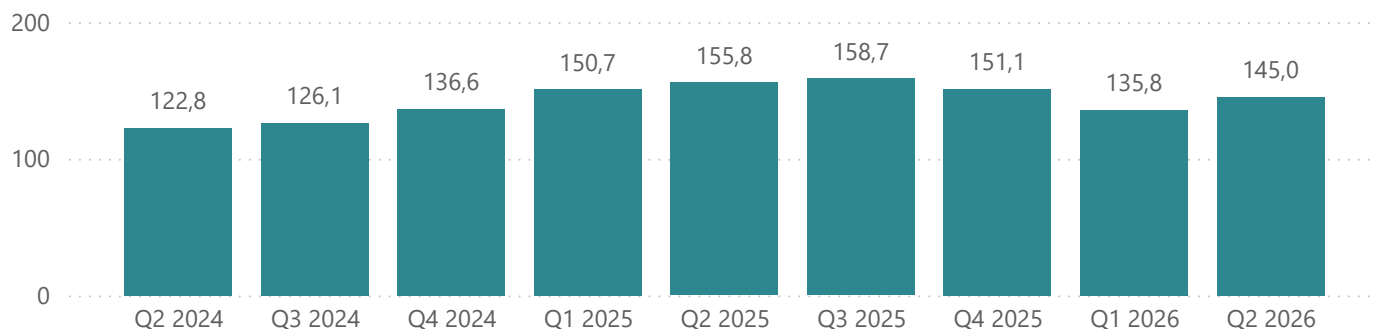
Avg. Of last 1 years (Positive)

147,7

Avg. Of last 2 years (Positive)

145,0

REIDIN REAL ESTATE PRICE SENTIMENT INDEX



SECTORAL OVERVIEW

• **REIDIN Real Estate Confidence Index** 2026 Q2 compared to last quarter, [Financial Institutions/Banks](#) has been measured as 90.9 (Moderately Negative) **more than 66.5%** of last quarter, [Real Estate Consultants](#) has been measured as 111.5 (Moderately Positive) **more than 37.1%** of last quarter.

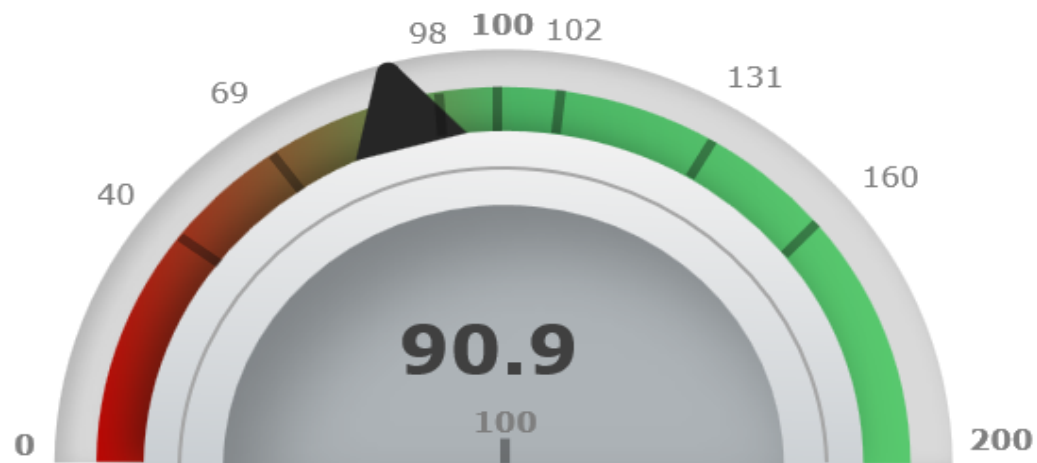
FINANCIAL INSTITUTIONS/BANKS

Quarterly Change

66,5%

Yearly Change

8,0%



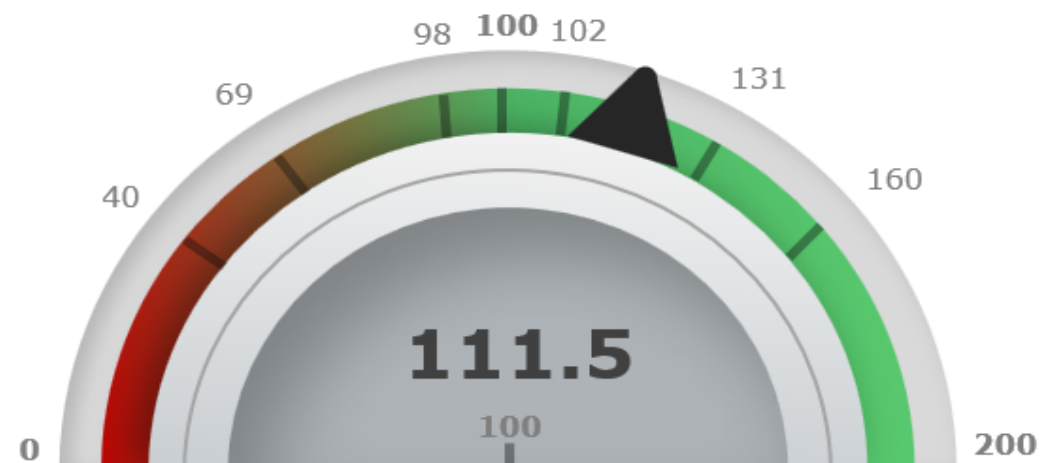
REAL ESTATE CONSULTANTS

Quarterly Change

37,1%

Yearly Change

34,5%



• **REIDIN Real Estate Confidence Index** 2026 Q2 compared to last quarter, [Real Estate Appraisers](#) has been measured as 78.3 (Moderately Negative) **less than 27.4%** of last quarter, [Real Estate Developers](#) has been measured as 106.9 (Moderately Positive) **more than 49.7%** of last quarter.

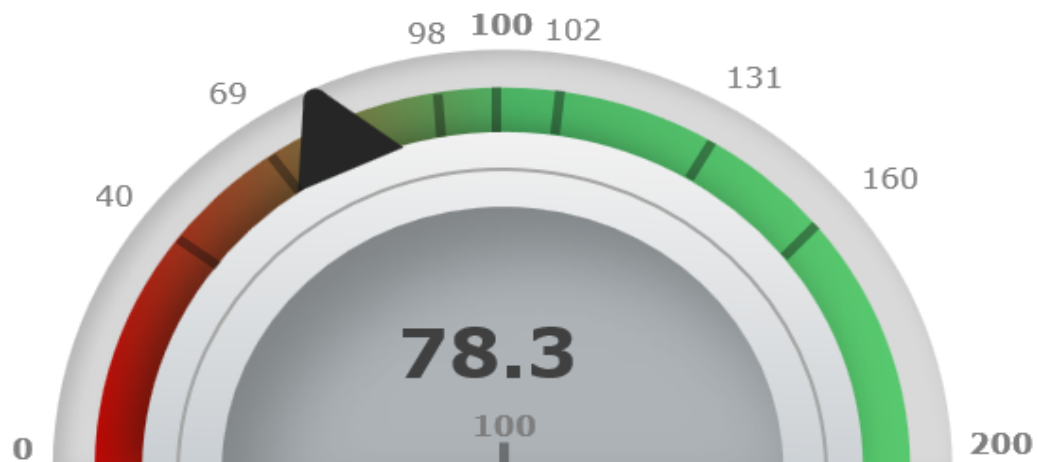
REAL ESTATE APPRAISERS

Quarterly Change

-27,4%

Yearly Change

-22,6%



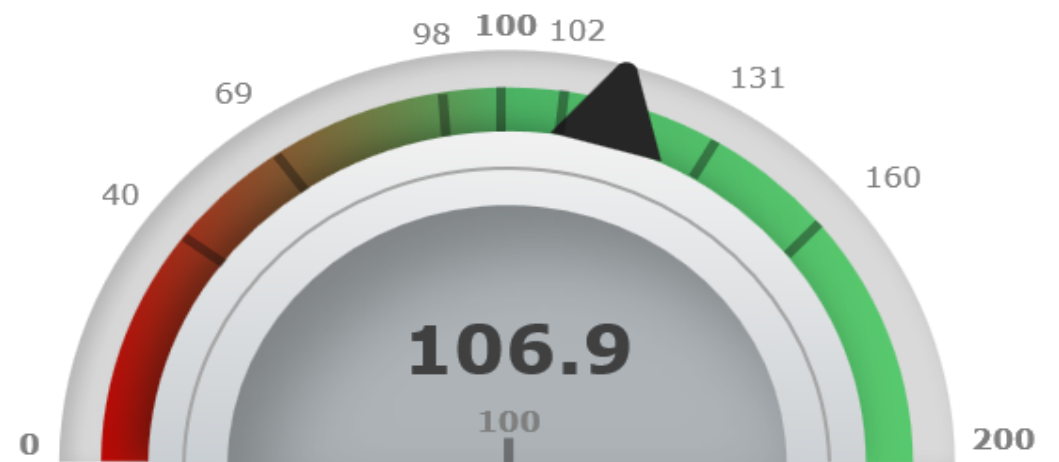
REAL ESTATE DEVELOPERS

Quarterly Change

49,7%

Yearly Change

-5,0%



DESCRIPTIONS and METHODOLOGY

The questions in the questionnaire prepared in the electronic environment and prepared for the next three months according to the past quarterly turnover are prepared considering the following main topics:

- Total Sales Volume
- Total Leasing Volume
- Supply/Project Launches
- Price Appreciations
- Financing Availability
- Economic Outlook

REIDIN Turkey Real Estate Confidence Index is calculated using the «Balance Method» and is evaluated within the range of 0-200.

In this method, numerical difference of percentage distribution of positive and negative answers (according to the result of the survey) is being calculated. 100 point is being added to the difference, and for each subsection an index value (with the range of 0-200) is calculated.

It indicates an optimistic outlook when the index is above 100, but it indicates a pessimistic outlook when it is below 100.

- [0,40) – **“Highly Negative”**
- [40 ,69) – **“Negative”**
- [69,98) – **“Moderately Negative”**
- [98, 100) – **“Nearly Stable”**
- 100 – **“Stable”**
- (100, 102] – **“Nearly Stable”**
- (102, 131] – **“Moderately Positive”**
- (131, 160] – **“Positive”**
- (160, 200] – **“Highly Positive”**

LEGAL NOTICE

Although all values, statements and visual materials in this report are provided, indicated and calculated neatly by REIDIN, we make no warranty, assurance or guarantee that materials and values are absolutely accurate. REIDIN highly recommends that this report should not be taken as an endorsement of or recommendation on any participation by any intending investor or any other party in any transaction whatsoever. This information is presented exclusively for use by REIDIN clients and professionals and all rights to the material are reserved and cannot be reproduced without prior written permission of REIDIN.

REIDIN
Data Analytics

Maslak Mahallesi, Büyükdere
Caddesi No:249/6
Sarıyer, İstanbul, Türkiye

T: 0850 217 3422

www.reidin.com info@reidin.com