

GENERAL OVERVIEW

• **REIDIN Real Estate Confidence Index** for 2026 Q1 has been measured as 104.1 (Moderately Positive) **more than 13.5%** of last quarter.

Quarterly Change

13,5%

Yearly Change

-2,6%

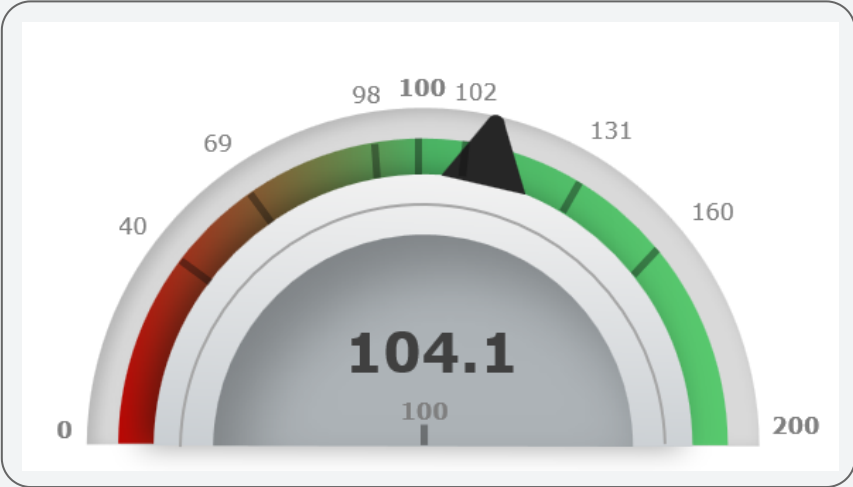
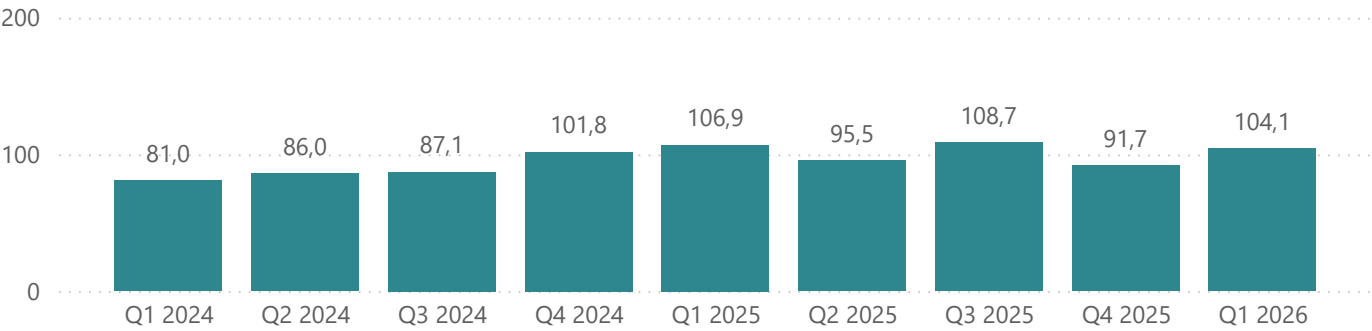
Avg. Of last 1 years (Stable)

100,0

Avg. Of last 2 years (Moderately Negative)

97,7

REIDIN REAL ESTATE CONFIDENCE INDEX



• **REIDIN Real Estate Price Sentiment Index** for 2026 Q1 has been measured as 135.8 (Positive) **less than 10.1%** of last quarter.

Quarterly Change

-10,1%

Yearly Change

-9,9%

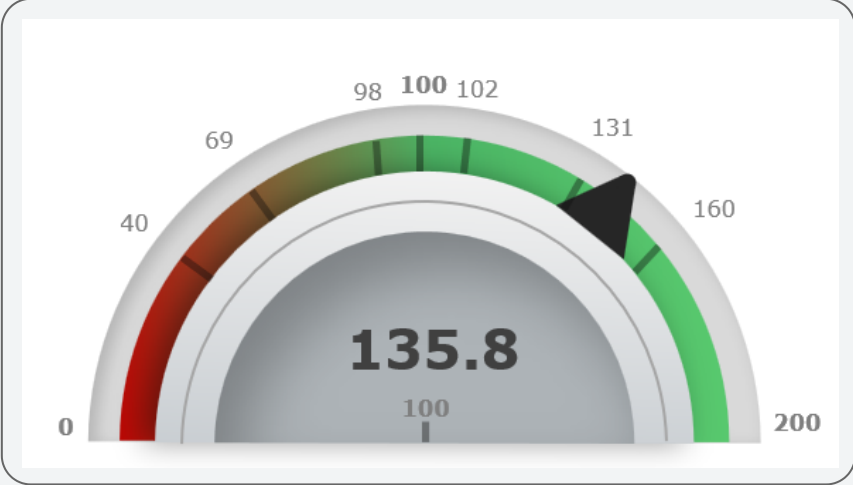
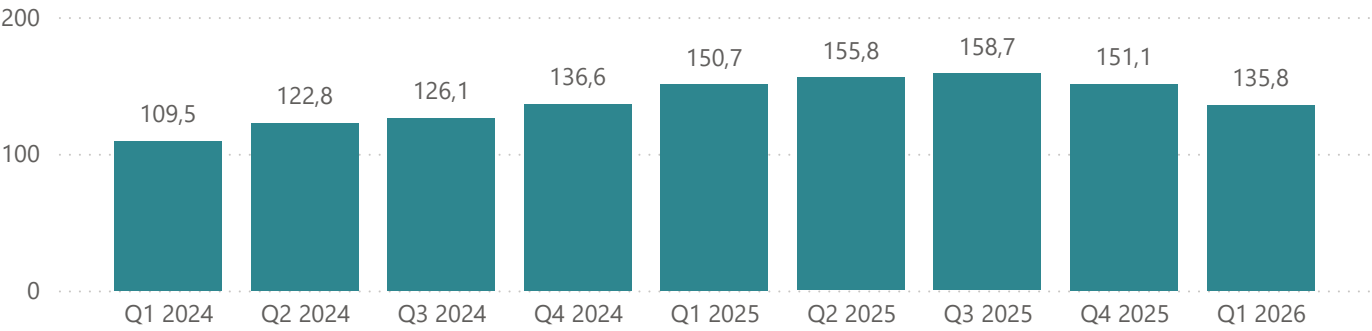
Avg. Of last 1 years (Positive)

150,4

Avg. Of last 2 years (Positive)

142,2

REIDIN REAL ESTATE PRICE SENTIMENT INDEX



SECTORAL OVERVIEW

• **REIDIN Real Estate Confidence Index** 2026 Q1 compared to last quarter, [Financial Institutions/Banks](#) has been measured as 54.6 (Negative) **less than 49.3%** of last quarter, [Real Estate Consultants](#) has been measured as 81.3 (Moderately Negative) **less than 27.5%** of last quarter.

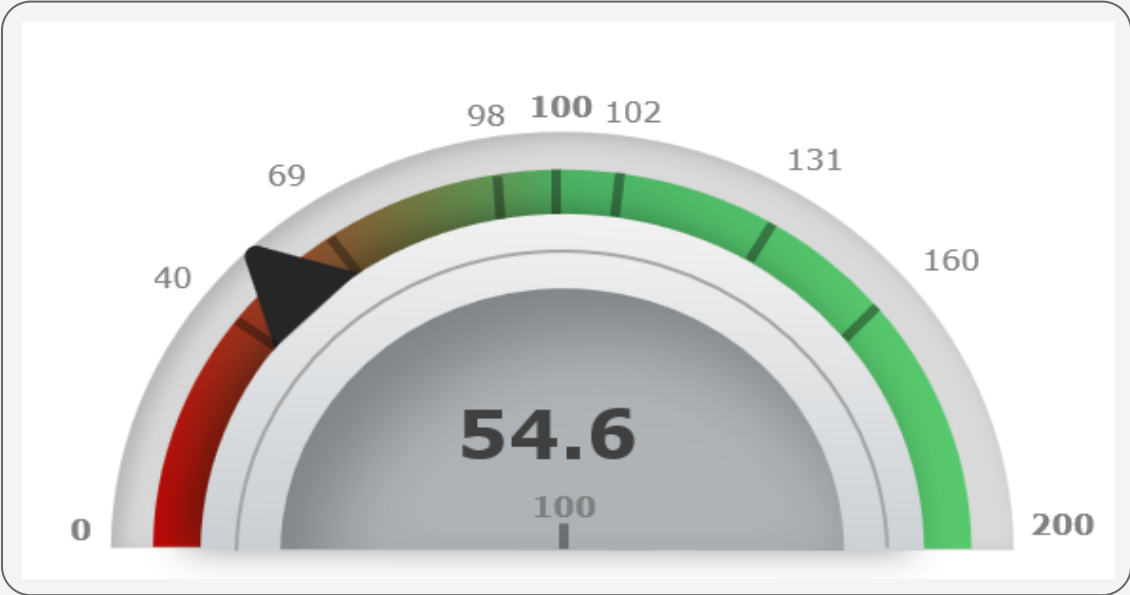
FINANCIAL INSTITUTIONS/BANKS

Quarterly Change

-49,3%

Yearly Change

1,3%



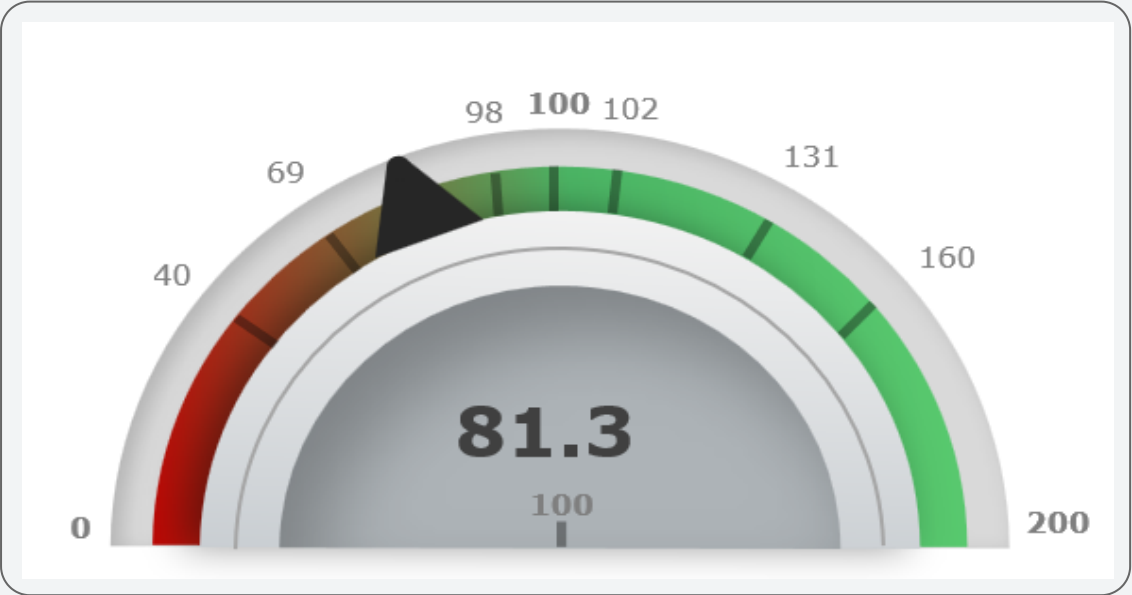
REAL ESTATE CONSULTANTS

Quarterly Change

-27,5%

Yearly Change

-5,9%



• **REIDIN Real Estate Confidence Index** 2026 Q1 compared to last quarter, [Real Estate Appraisers](#) has been measured as 107.8 (Moderately Positive) **more than 23.2%** of last quarter, [Real Estate Developers](#) has been measured as 71.4 (Moderately Negative) **less than 0.7%** of last quarter.

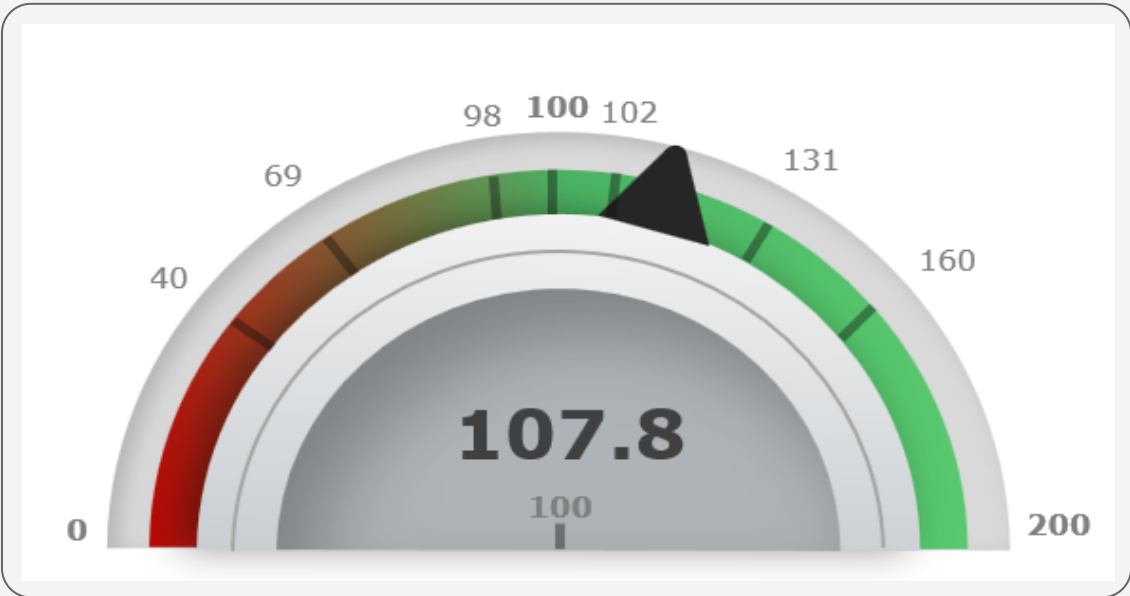
REAL ESTATE APPRAISERS

Quarterly Change

23,2%

Yearly Change

-4,1%



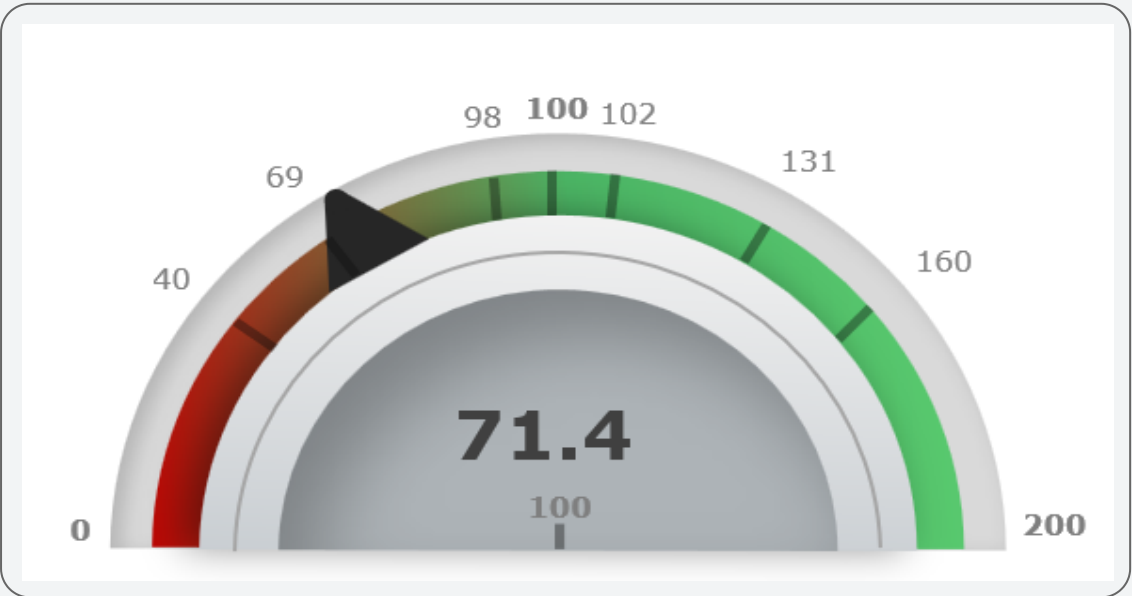
REAL ESTATE DEVELOPERS

Quarterly Change

-0,7%

Yearly Change

-43,8%



## DESCRIPTIONS and METHODOLOGY

The questions in the questionnaire prepared in the electronic environment and prepared for the next three months according to the past quarterly turnover are prepared considering the following main topics:

- Total Sales Volume
- Total Leasing Volume
- Supply/Project Launches
- Price Appreciations
- Financing Availability
- Economic Outlook

REIDIN Turkey Real Estate Confidence Index is calculated using the «Balance Method» and is evaluated within the range of 0-200.

In this method, numerical difference of percentage distribution of positive and negative answers (according to the result of the survey) is being calculated. 100 point is being added to the difference, and for each subsection an index value (with the range of 0-200) is calculated.

It indicates an optimistic outlook when the index is above 100, but it indicates a pessimistic outlook when it is below 100.

- [0,40) – **“Highly Negative”**
- [40 ,69) – **“Negative”**
- [69,98) – **“Moderately Negative”**
- [98, 100) – **“Nearly Stable”**
- 100 – **“Stable”**
- (100, 102] – **“Nearly Stable”**
- (102, 131] – **“Moderately Positive”**
- (131, 160] – **“Positive”**
- (160, 200] – **“Highly Positive”**

## LEGAL NOTICE

Although all values, statements and visual materials in this report are provided, indicated and calculated neatly by REIDIN, we make no warranty, assurance or guarantee that materials and values are absolutely accurate. REIDIN highly recommends that this report should not be taken as an endorsement of or recommendation on any participation by any intending investor or any other party in any transaction whatsoever. This information is presented exclusively for use by REIDIN clients and professionals and all rights to the material are reserved and cannot be reproduced without prior written permission of REIDIN.



Maslak Mahallesi, Büyükdere  
Caddesi No:249/6  
Sarıyer, İstanbul, Türkiye

T: 0850 217 3422

[www.reidin.com](http://www.reidin.com) [info@reidin.com](mailto:info@reidin.com)

